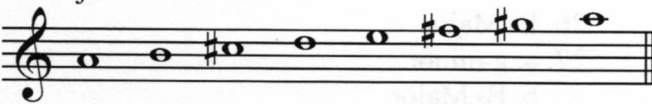
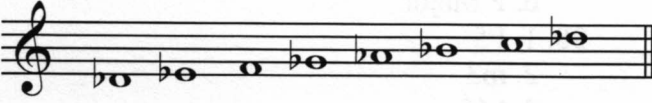
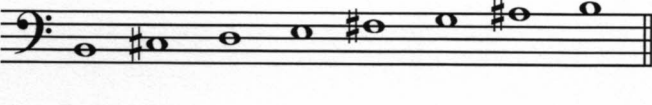
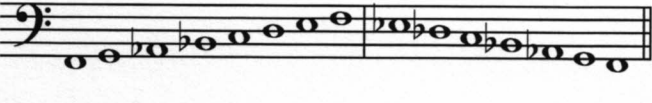
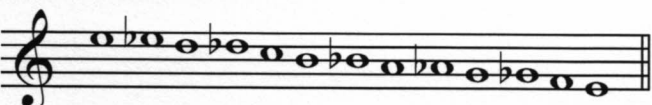
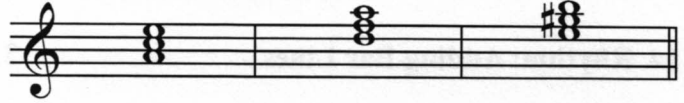
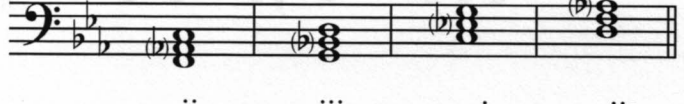

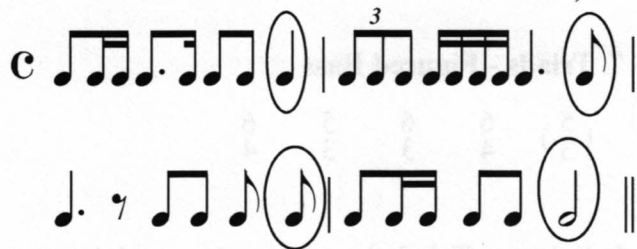


Please read *Guidelines for Grading Theory Tests.*

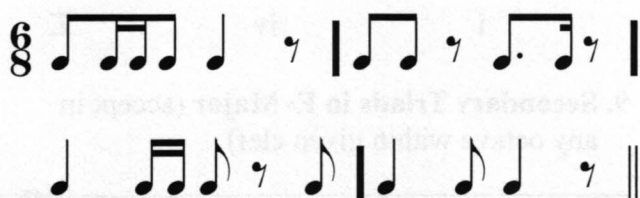
	Points
1. Major Key Signatures	5
E Major, A ^b Major, G ^b Major, F [#] Major, C ^b Major	
2. Minor Key Signatures	4
c minor, e minor, f minor, b minor	
3. Scales	4
A Major	
	
D ^b Major	
	
b minor, harmonic form	
	
f minor, melodic form	
	
4. Chromatic Scale on E	1
	
5. Intervals	5
(P4), M7, P4, M6, P5, m3	
6. Triads - Naming	5
(Do not delete points if incorrect figured bass is included)	
(C Major), a ^b minor, E Major, f diminished, b minor, D ^b Major	

	Points
7. Triads - Figured Bass	4
($\begin{smallmatrix} 5 \\ 3 \end{smallmatrix}$) $\begin{smallmatrix} 6 \\ 4 \end{smallmatrix}$ $\begin{smallmatrix} 6 \\ 3 \end{smallmatrix}$ $\begin{smallmatrix} 5 \\ 3 \end{smallmatrix}$ $\begin{smallmatrix} 6 \\ 4 \end{smallmatrix}$	
8. Primary Triads in a minor (accept in any octave within given clef)	3
	
i iv V	
9. Secondary Triads in E^b Major (accept in any octave within given clef)	4
	
ii iii vi vii ^o	
10. Scale Degree Names	6
a. Dominant c. Mediant e. Supertonic	
b. Leading tone d. Dominant 7 f. Submediant	
11. Dominant 7th Chords (accept in any octave) 4	
	
Maj: ∇_5^6 Maj: ∇^7 Maj: ∇_5^6 min: ∇^7	
12. Cadences	3
Plagal, Half, Authentic	

13. Rhythm: Adding Notes (accept eighth and sixteenth notes that are attached with a beam) 4



14. Rhythm: Adding Bar Lines 3



15. Terms 8

- animated, with spirit
- peacefully, tranquil, calm
- D \flat and C \sharp
- very slow, stately
- with motion
- brisk, lively
- turn
- mordent

16. Historic Periods 3

- (Baroque)
- Classical
- Romantic
- 20th & 21st Centuries (Contemporary)
(accept either)

17. History - Composers 2

Mozart: Classical
Kabalevsky: 20th & 21st Centuries
(Contemporary)

- Musical Analysis: *Notebook for Nannerl* 9

- F, C, and G (accept in any order)
- 1 beat
- accidental
- triplet
- B Major $\frac{6}{8}$
- trill
- a. I 6
b. IV
c. V

- Musical Analysis: *Heller* 10

- a little slower than *allegro*
- B \flat Major
- a. g minor
b. B \flat Major
c. D Major
d. F Major
1. P5
2. m3
3. M6
- Romantic